

9
8
7
6
5
4
3
2
1
Nautical Miles — 1:80,000 scale

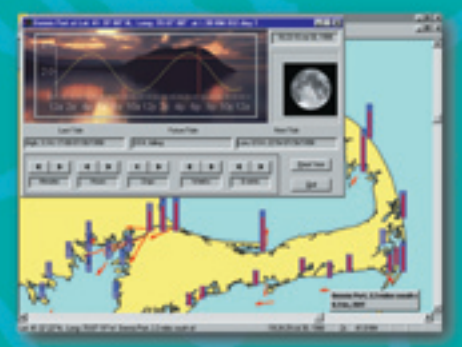
Eldridge TideWare sets the new standard for tide, current, and coastal map software

Eldridge TideWare is the digital revolution of the renowned Eldridge Tide and Pilot Book, the marine industry's most respected tide and current reference guide, since 1874. Eldridge TideWare integrates the "expertise of tradition" with vector mapping technology to work seamlessly for you. Whether you are a recreational boater, avid fisherman, professional captain, scuba diver, clam digger or beachcomber, Eldridge TideWare gives you "tidal vision" when planning your next marine experience.

Outstanding Eldridge TideWare features

- Includes the most comprehensive NOAA tide and current data through 2004. Stay up-to-date beyond 2004 with free annual data upgrades for the lifetime of this product.
- 50 NOAA/NOS digital vector shoreline maps of the United States East Coast and the Gulf of Mexico offer unparalleled clarity and detail with resolutions of 1:40,000 to 1:60,000.
- Enhanced scalability allows you to zoom from wide angle to extreme close-up views instantly.
- Current diagrams with animation features to create stop-action and timed sequences for boat races, fishing trips and cruise planning.
- Real-Time Window provides daily views of tides and currents with scrolling, logging notes and annotated map icons.
- Create your own tide and current locations with custom port controls.

*This software is not to be used for navigation. Eldridge TideWare is a unique information resource and reference for tides and currents using coastal maps.



Real-



Set local knowledge measurements for your dock, marina, fishing spot, or any port of call



Current diagrams feature stop action and sequential views of tides and currents for any time or date



Real-time, real-place tide and current animations

v4.0
ELDRIDGE
TideWare



Tradition meets technology

Real-time tide, current and coastal map software

All charts included!
50 NOAA/NOS digital vector shoreline maps, Maine to Texas.

The most up-to-date and comprehensive NOAA tide and current data through 2004.



Comments or suggestions? Contact us on the Internet at www.tideware.com
Send written correspondence to:
Eldridge TideWare
P.O. Box 11456
Washington, DC 20008

ELDRIDGE
TideWare
TideWare
ELDRIDGE
TideWare

v4.0
ELDRIDGE
TideWare

Free telephone and website support for registered users

Minimum system requirements

- Windows 95/98/NT 4.0
- 486DX Processor (Pentium recommended)
- 16 MB RAM or greater recommended
- 256 or better VGA color display
- CD-ROM drive
- Mouse or other pointing device
- Color printer (optional)

Box contents

- Eldridge TideWare CD-ROM
- Registration card
- Installation instructions
- License agreement



CD-ROM
WINDOWS 95 COMPATIBLE